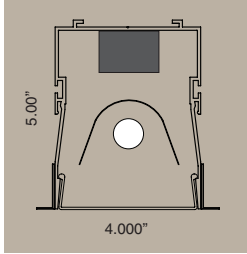
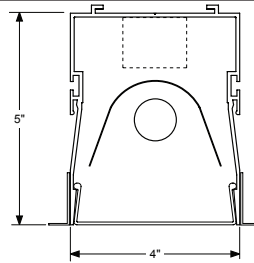


GB44RC2 G-Beam Recessed Series

Recessed
Direct Illumination



GB44RC2
4.00" wide direct luminaire



1 x T8



Construction

Housing: Extruded aluminum body 4.00" wide x 5.00" high, 6063T5, 0.070" minimum thickness. Available in one piece, unbroken lengths up to 12'.

Joiner System: Automatic alignment, no loose parts, one tool to tighten two factory installed bolts for a hairline seam. No light leaks.

Ballast: Osram - Sylvania or equal electronic RS ballast with less than 10% THD is standard: **ERS**.

Mounting: Recessed into a ceiling system. (specify **REC**).

Electrical

UL listed wiring and components throughout. Housing is completely wired with quick-connect plugs at all mating joints and individually tested.

All fixtures bear UL & CUL Dry Location labels. Damp Location labels are available. Specify **DL** in the Options field.

Optical Performance

Reflectors: Shall be semi specular aluminum formed.

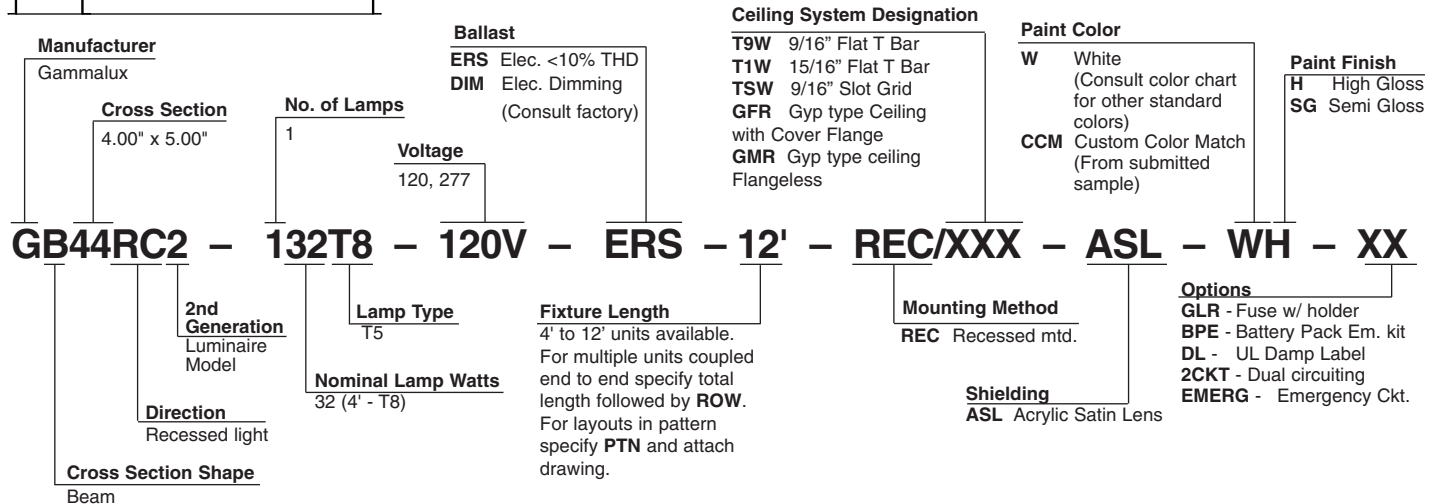
Acrylic Satin Lens: Shall be 15% DR acrylic. Specify **ASL**

Performance: Independent photometric laboratory testing - ITL or equal - is required. Luminaire is 73% efficient.

Finish

Housing assembly is electrostatically sprayed with high solids aliphatic two component polyurethane to an average thickness of 2 mils. over acid etching primer. Specify **H** for high gloss in Paint Finish field. Specify **SG** for semi gloss.

Standard Features



Photometric Report

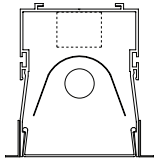
GB44RC2-132T8-120VERS-4'-REC-ASL-PT

Test: ITL #59109 08/24/07

IES Datafile: ITL59109.IES

Lamps: 1-FO32T8 (2950 lumens)

73.1% Efficiency

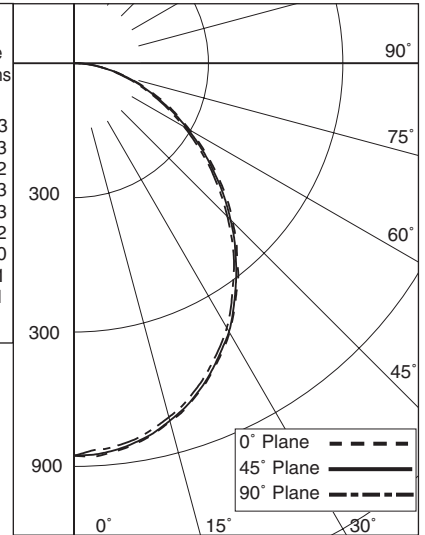


100%

Vertical Angles	Horizontal Planes			Zone Lumens
	0°	45°	90°	
0°	876	876	876	
5°	874	871	863	83
15°	828	826	818	233
25°	746	743	734	342
35°	631	627	617	393
45°	501	494	484	383
55°	366	358	348	322
65°	238	230	223	230
75°	125	123	117	131
85°	38	36	38	41
90°	0	0	0	

LUMINANCE DATA IN CANDELA/SQ M

ANGLE IN DEG	AVERAGE 0-DEG	AVERAGE 45-DEG	AVERAGE 90-DEG
45	5849.	5767.	5650.
55	5268.	5152.	5008.
65	4649.	4493.	4356.
75	3987.	3923.	3732.
85	3599.	3410.	3599.



Coefficients of Utilization – Zonal Cavity Method

Effective Floor Cavity Reflectance (rfc) = 0.20

RCC	80%				70%				50%				30%			
RW	70%	50%	30%	10%	70%	50%	30%	10%	50%	30%	10%	50%	30%	10%		
RCR																
0	.87	.87	.87	.87	.85	.85	.85	.85	.81	.81	.81	.78	.78	.78		
1	.80	.76	.73	.71	.78	.75	.72	.70	.72	.69	.67	.69	.67	.65		
2	.73	.67	.62	.58	.71	.66	.61	.57	.63	.59	.56	.61	.58	.55		
3	.67	.59	.53	.49	.65	.58	.53	.48	.56	.51	.48	.54	.50	.47		
4	.61	.53	.46	.42	.60	.52	.46	.41	.50	.45	.41	.48	.44	.40		
5	.56	.47	.41	.36	.55	.46	.40	.36	.45	.40	.36	.44	.39	.35		
6	.52	.43	.36	.32	.51	.42	.36	.32	.40	.35	.31	.40	.35	.31		
7	.49	.39	.33	.28	.47	.38	.32	.28	.37	.32	.28	.36	.31	.28		
8	.45	.36	.29	.25	.44	.35	.29	.25	.34	.29	.25	.33	.28	.25		
9	.42	.33	.27	.23	.41	.32	.27	.23	.31	.26	.23	.31	.26	.23		
10	.40	.30	.25	.21	.39	.30	.24	.21	.29	.24	.21	.28	.24	.21		

Mtg. Dimensions

Recessed luminaire mounting dimensions and overall luminaire dimensions are determined in part, by the ceiling system in which they are installed. Therefore we can not provide mounting dimensions in this document.

Illustrations Of Default (D) Mounting Systems

① FIXTURE BOTTOM IS FLUSH WITH BOTTOM OF T-BAR **T9W**

② FIXTURE BOTTOM IS FLUSH WITH BOTTOM OF T-BAR **T1W**

③ FIXTURE BOTTOM IS FLUSH WITH BOTTOM OF T-BAR **TSW**

④ FLANGE BELOW CEILING MOUNTING **GF**

⑤ FLANGELESS MOUNT (MUD FLANGE) **GMR**

RECESSED GB44RC2 LUMINAIRE MOUNTING SYSTEMS CROSS SECTIONS

- T9** = 9/16" Flat T Bar
- T1** = 15/16" Flat T Bar
- TS** = Slot Grid
- GF** = Gyp Type Ceiling with Cover Flange
- GM** = Gyp Type Ceiling Flangeless (Mud Flange)